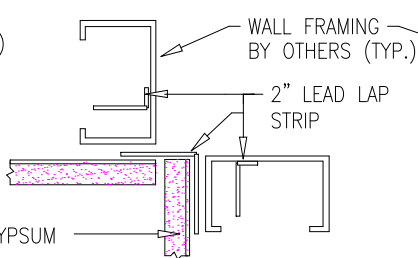
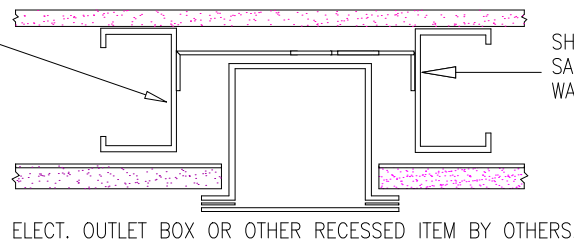


VERT. OR HORIZ. JOINT

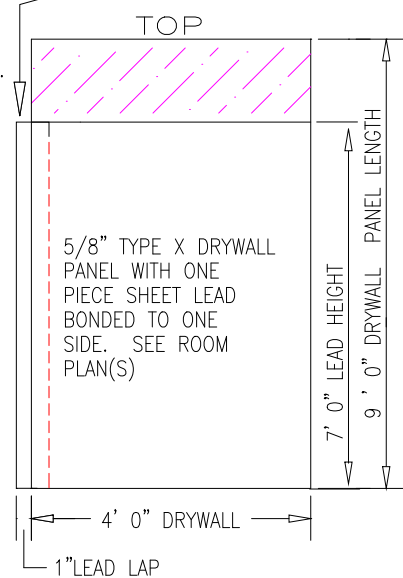


CORNER JOINT

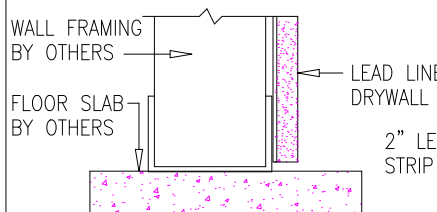


RECESSED ITEMS

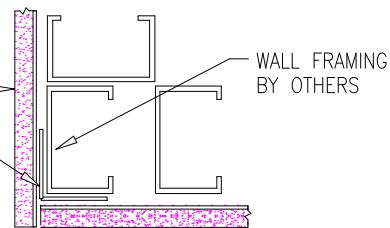
2" WIDE LEAD LAP STRIP SAME THICKNESS AS LEAD LINING. SHIPPED LOOSE, INSTALLED SEPARATELY.



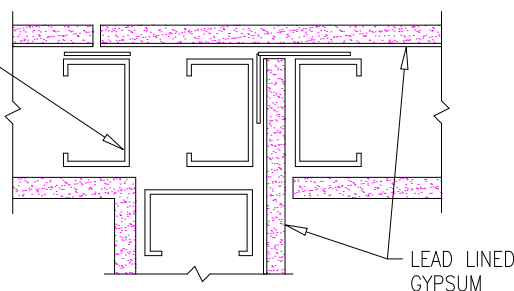
LEAD LINED PANEL



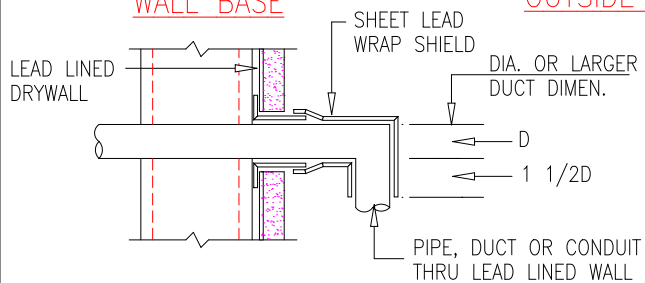
WALL BASE



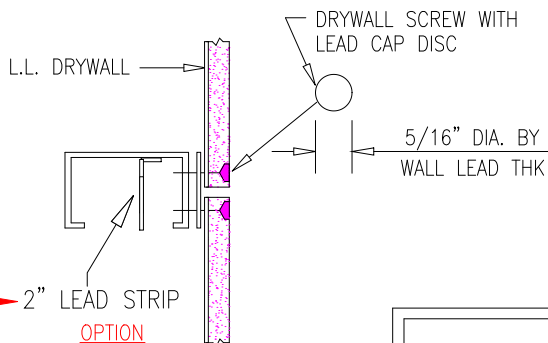
OUTSIDE CORNER



THRU-WALL JOINT



PIPE, DUCT OR CONDUIT PENETRATION (HORIZ. OR VERT.)



FASTENER METHOD

LEAD LINED DRYWALL SECTIONS - TYPICAL

GENERAL NOTES:

- \* LEAD LINING DETAILS SHOWN ARE TYPICAL & SIMILAR FOR METAL STUD, WOOD STUD OR OTHER FURRED SYSTEMS
- \* LEAD LINED DRYWALL MATERIAL ONLY FURNISHED BY LONE STAR X-Ray FOR INSTALLATION BY OTHERS
- \* LEAD LINING FOR ELECT. SWITCH, DUPLEX WALL BOXES AND/OR OTHER DEVICES FURNISHED & INSTALLED BY OTHERS
- \* WHERE EQUIPMENT, FIXTURES, DUCTS, PIPES, ETC. PIERCE THE LEAD LINING, LEAD WRAP THE ITEM ALL AROUND & BEHIND TO PROVIDE A CONTINUOUS LEAD COVER, SHEET LEAD FOR THESE FURNISHED & INSTALLED BY OTHERS

THIS DOCUMENT AND THE INFORMATION CONTAINED HEREON IS PROPERTY OF LONE STAR X-RAY, AND MAY NOT BE ALTERED, COPIED, USED FOR MANUFACTURE OR COMMUNICATED TO ANY OTHER PERSON WITHOUT THE WRITTEN PERMISSION OF LONE STAR X-RAY.

|                  |               |   |                 |
|------------------|---------------|---|-----------------|
| MATERIALS LIST   |               |   |                 |
| CONTRACTOR:      |               | PROJECT:  |                 |
| CONTACT:         |               | <b>LONE STAR X-RAY SHIELDING</b><br>P.O. BOX 2176 SPLENDORA, TX 77372 |                 |
| PROJECT NUMBER - |               | DRAWING TITLE:<br>LEAD LINED GYPBOARD DETAILS                         | REV:<br>10/7/08 |
| DATE:            | SCALE: N.T.S. | FILE NO.: LSLET-01  | SHEET: 1 of 1   |
|                  |               |   | BY: L.M.        |